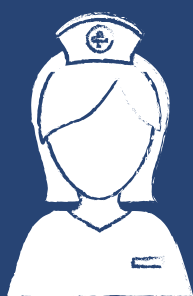


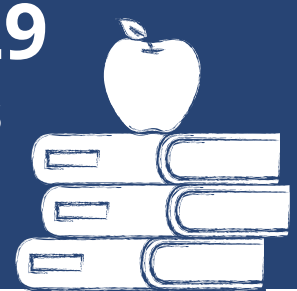
## IMPACT since launching in 2021:



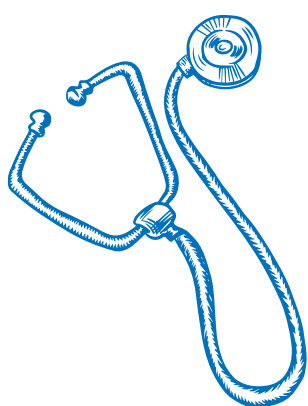
**878**  
School Nurses



**326,829**  
Students



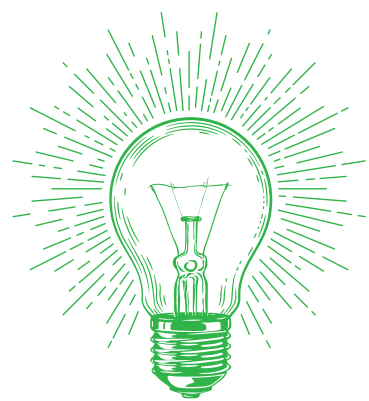
### Reimagining School Health



- Promoted school health **data sharing** with a guidance document and training module.
- Advanced **standards** for healthy, supportive school health work environments.
- Advanced methods to use data to **identify inequities**.
- Aligned with the Centers for Disease Control and Prevention's 10 Essential Public Health Services to promote policies, systems, and local/regional advocacy to **remove health equity barriers**.

### Innovation & Research

- Identified innovative school nurse **funding and staffing models**.
- Facilitated implementation of **school health policies**.
- Translated *School Nursing: Scope and Standards of Practice* to operational **competencies**.
- Evaluated state laws for **best practices** and up-to-date cost reimbursement.



### Promoting Leadership



- Held two Successful School **Leadership Summits**.
- Identified school nurse burnout, retention, and **retainment facilitators**.
- Developed **evidence-based** advocacy insights and fact sheets.

### Publications



- AARP Blogs
- Guidance Document: *Enhancing School Health through Data Collaborations*
- Journal of School Nursing Editorials
- JPHMP Direct Article

### Presentations

- American Public Health Association
- Maine Association of School Nurses
- Northeastern University School Health Academy Election Day Conference
- PBS WVIA Television Keystone Edition
- Pennsylvania Association of School Nurses and Practitioners

### What's Ahead...

- Developing implementation guidance for school health services, including systematic reviews, with the World Health Organization.
- Developing a school nurse leadership academy with George Mason University through a grant from the Virginia Department of Education.
- Advancing evidence-based district standards supporting school health services.
- Creating a program for school principals and superintendents on the role of the school nurse.
- Advancing the use of data to identify and address health inequities and promote best practices for school nurses.

### Contact Us

Learn more about building policy, research, and skills to improve student health.

[phaboard.org/initiatives/center-for-school-health-innovation-quality/](https://phaboard.org/initiatives/center-for-school-health-innovation-quality/)



[C4SHIQ@phaboard.org](mailto:C4SHIQ@phaboard.org)



### Thanks to Our Supporters:



**OPPORTUNITY LABS**

